

SZÁLÍTOTTAKSZALÁMIFOGALMAZOTT

STJLVAN LETTERS

FASTSLÅR NIELS VALENTIN SJÆLLAND LOKALMIJØET

ZÁSADNÁ ZMENA

TAS-SAHHU GHAL-KURA HUW

KUNST^{PER}SCHRIFTEN

ØSTBLOKLANDEN ZUILEN INSTELLINGEN EVENTUELE RELEN

ARTE SUTILE^EFORMAS

ÁSTÆÐANAL SHERJAR SÖGN

VILKÉJO PILKĄ KOSTIUMĄ PASIVAİKŠČIOJIMAI

ART^OF^FTYPOGRAPHY

À RÉPUBLIQUE TCHÈQUE & SLOVAQUIE

LESZEK MILLER & WARSZAWA

FEDRA DISPLAY

Instead of extrapolating lighter versions of Fedra Sans for display use, we decided to specially design a new type family. This allowed us to change the spacing and kerning of the characters, based on the assumption that they would be used in larger sizes. The letter and word spacing is tighter, hanging numerals and currency symbols replaced with lining ones, the design of many characters modified and a large collection of titling ligatures were added.

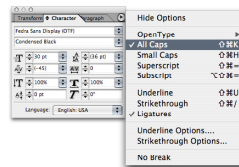
The main difference, however, is in the weight of the fonts: thin and hairline. The strokes are nearly monolinear, with slight nuances to optically correct critical points. From this base, we designed a condensed set and a compressed set, suitable for compact text setting. The compressed versions are not meant to be used at text sizes, however it is the resolution of the output device that determines the smallest size that can be used.

Fedra Sans Display contains also a set of ligatures designed for the use in larger sizes. Each version includes over 300 ligatures which are accessible as discretionary ligatures (in OpenType) or as individual glyphs in Expert sets, as well as a set of ornaments and superior letters. Because of the limited space in which the letters are drawn, most very narrow fonts become geometrical, with straight vertical lines instead of curves. Fedra Display, on the other hand, maintains the curved characteristic of the original.

(012-345-789) H-H-H
 (012-345-789) H-H-H

CASE SENSITIVE FORMS (CASE)

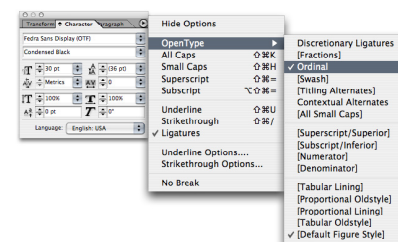
When caps are applied from within an application (not when text is typed in caps) appropriate case-sensitive forms are automatically applied. Regular brackets, paranthesis, dashes, and the hyphen are replaced with their capital forms.



1st Place 3rd Price
 1ST Place 3RD Price

ORDINALS (ORDN)

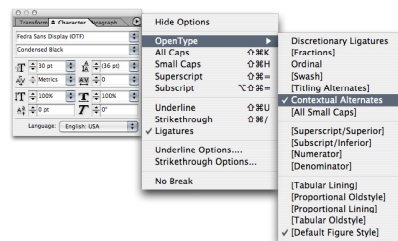
Default glyphs are replaced with their predesigned ordinals.



BILLY THE KIDD
 BILLY^{THE} KIDD

CONTEXTUAL ALTERNATES (CALT)

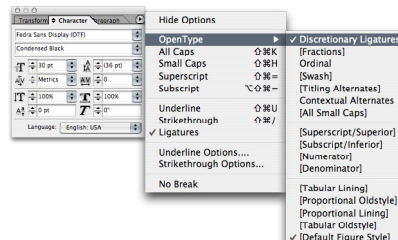
Replaces default glyphs with alternate forms which provide better joining behavior. Contextual alternates are active by default in Adobe InDesign.



CASTRO THATCHER
 CASTRO THATCHER

DISCRETIONARY LIGATURES (DLIG)

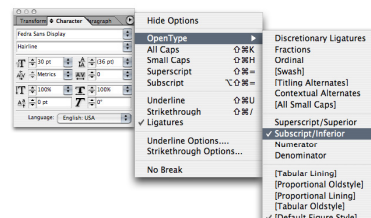
Besides standard ligatures (fi fl ffi ffl fk, etc), Fedra Sans Display 1 contains a collection of over 800 discretionary ligatures. These ligatures are not active by default in Adobe InDesign.



BIG SMALL BIG SMALL
 BIG^{SMALL} BIG_{SMALL}

SUPERIORS/INFERIORS (SUPS/SINF)

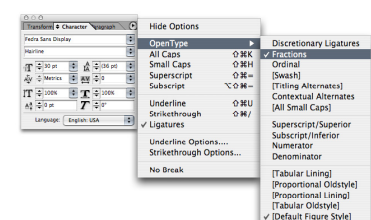
Replaces default letters or numbers with inferior or superior figures (more legible than scaled glyphs).



1/200 12345/67890
 1/200 12345/67890

FRACTIONS (FRAC)

Replaces figures separated by a slash with fractions and composes a new arbitrary fraction.



Font overview

Family name

Fedra Display 1

Designed by

Peter Bilak with Pieter van Rosmalen and Vera Evstafieva

Released

April 2005

Font format

OpenType CFF

Supported encodings

Latin 1 (1252), Latin 2 –Central European (1250), Turkish (1254), Baltic (1257)

Number of characters per style

936

Number of fonts in family

6

Supported OpenType features

Case-Sensitive Forms (CASE), Ordinals (ORDN), Contextual Alternates (CALT), Standard Ligatures (LIGA), Discretionary Ligatures (DLIG), Arbitrary Fractions (FRAC), Denominators (DNOM), Numerators (NUMR), Scientific Inferiors (SINF), Superscript (SUPS), Access All Alternates (AALT), Ornaments (ORNM)

Available exclusively at

www.typotheque.com

OpenType fonts work in all applications, however, only a few applications (e.g. Adobe InDesign, Illustrator) support the substitution features available in the fonts. For the complete list of applications taking advantage of this technology please visit www.typotheque.com/static/opentype_feature_support .