

Typotheque type specimen & OpenType feature specification. Please read before using the fonts.

Greta Display Std

Greta Display Pro

Greta Display Std is an OpenType font family supporting Latin based European languages, with their own small caps , with extensive typographic features.

Std A-z Ćę İğ €

Greta Display Pro is an OpenType font family supporting Latin based European languages, Vietnamese, Cyrillic and Greek with their own small caps , with extensive typographic features.

Pro A-z Ćę İğ € Viêt Ελλ "ΕΞ Κwp

(If you only use Latin, choose Std fonts)

*Designed by Peter Bilak & Nikola Djurek, 2008
Cyrillic by Gayaneh Bagdasaryan & Alexei Kassian*

What is OpenType?

OpenType is a cross-platform font format developed by Adobe and Microsoft. It has a potential to provide advanced typographic features such as multilingual character sets, ligatures, small capitals, various numeral styles, and contextual substitutions.

OpenType, as the new industry standard, supports Unicode, which enables the fonts to contain a large number of characters. While PostScript fonts are a technically limited to a maximum of only 256 characters, OpenType fonts can have more than 65,000 glyphs. This means that a user does not need to have separate fonts for Western, Central European, Baltic, Cyrillic or Greek languages, but could have one single file which supports all these encodings.

OpenType fonts work in all applications, however only some applications take advantage of the advanced OpenType features. Other applications will only use the first 256 characters. For more about OpenType information go to www.typotheque.com/opentype

Available versions

Greta Display Light

Greta Display Light Italic

Greta Display Regular

Greta Display Regular Italic

Greta Display Medium

Greta Display Medium Italic

Greta Display Bold

Greta Display Bold Italic

About the font

Greta is a contemporary typeface family specifically designed for the demands of newspaper printing; it consists of four primary text weights optimized for use at small sizes.

Greta family also includes Greta Display headline cuts. These four weights were designed with increased contrast, tighter spacing and more refined details and are ideally suited for headline typography and nameplates. While the text fonts are typical workhorse typefaces, the Greta Display is elegant, compact and strong at large sizes, ideal for effective headlines. With its combination of text and display fonts, Greta offers a complete palette of typographic choices.

About the designers

Peter Bilak was born in Czechoslovakia, studied in England, the USA, and France to end up in The Netherlands. Works in the field of editorial, graphic, and type design, teaches part time at the Royal Academy in The Hague. He is the founder of Typotheque (1999), and *Dot Dot Dot* magazine, which he co-edited between 2000-2007. Besides fonts in Typotheque he has also designed fonts for FontShop International (e.g. *FF Eureka*).

Nikola Djurek was born in Croatia, studied in Croatia, Italy and finally in The Netherlands at postgraduate master course Type & Media at Royal Academy of Art in The Hague. Nikola is founder of Typonine studio for graphic and type design, teaches at University of Zagreb and Academy of art in Split.

Vicar guilty of child sex abuse

Greta Display Light

US and Syria hold landmark talks

Greta Display Light Italic

Space telescope spots new planet

Greta Display Regular

Terror suspects set for release

Greta Display Regular Italic

Voting under way as Wales decides

Greta Display Medium

SOF calls end to terror campaign

Greta Display Medium Italic

Computer ate two children

Greta Display Bold

Youth arrested over stab death

Greta Display Bold Italic

COURT BLOW TO BARCLAYS ABN DEAL

Greta Display Light

BLAIR 'WILL NOT QUIT YET AS MP'

Greta Display Regular

DOG CHARGED WITH KILLING MAN

Greta Display Medium

VOTERS OUT FOR 'SUPER THURSDAY'

Greta Display Bold

Οργή και διάψευση από τη Χαριλάου

Greta Display Light

4 κακουργήματα στο σκάνδαλο «Siemens»

Greta Display Light Italic

Κατηγορεί τον ανακριτή για μεροληψία

Greta Display Regular

Δωρεάν διανομή φρούτων στα σχολεία

Greta Display Regular Italic

Εκλεισε η υπόθεση της Μαντλίν

Greta Display Medium

Απελευθερώθηκε η Μπετανκούρ έπειτα από

Greta Display Medium Italic

«Στον αέρα» το νέο ασφαλιστικό

Greta Display Bold

Σε νευρική κρίση η κυβέρνηση

Greta Display Bold Italic

ΠΛΟΙΑΡΧΟΣ: ΟΙ ΕΝΤΟΛΕΣ ΠΟΥ ΕΔΩΣΑ

Greta Display Light

ΒΟΥΛΙΑΖΟΥΝ ΣΤΗΝ ΚΡΙΣΗ

Greta Display Regular

ΙΣΧΥΡΗ ΕΚΡΗΞΗ ΙΣΟΠΕΔΩΣΕ

Greta Display Medium

ΑΝΑΓΝΩΡΙΣΗ ΠΡΟΣΦΟΡΑΣ

Greta Display Bold

Репортаж с праздничного шествия

Greta Display Light

Репортаж Галины Замятиной с церемонии

Greta Display Light Italic

Будущее Амурска не в заводах-гигантах

Greta Display Regular

Тест: можете ли вы быть неотразимыми?

Greta Display Regular Italic

Болезни и вредители не одно и тоже

Greta Display Medium

Такого звания нет ни у кого в крае

Greta Display Medium Italic

На фиг борьбу с коррупцией вместе

Greta Display Bold

Они чистили край, теперь зачищают

Greta Display Bold Italic

В УССУРИЙСКЕ РАЗРУШАЮТ ЖИЛФОНД

Greta Display Light

ЭЛИТНЫМ ДОМОМ ПО ПАТРИОТИЗМУ

Greta Display Regular

НОВОСТИ С ГАДЮКИНОЙ ГОРКИ

Greta Display Medium

МУЖСКАЯ МОДА ЭТОГО ЛЕТА

Greta Display Bold

Overview of supported OpenType layout features

ıȷab?! (doh-ehg) ▶ ıȷAB?! (DOH-EHG)

iT CASE SENSITIVE FORMS (CASE)
When function 'change to caps' is applied from within an application (not when text is typed in caps) appropriate case-sensitive forms are automatically applied. Regular brackets, parenthesis, dashes and hyphens are replaced with their capital forms.

'ABC' 'Abc/D[(ef)]g'?! ▶ 'ABC' 'ABC/D[(EF)]G'?! fig.1
'ABC' 'Abc/D[(ef)]g'?! ▶ 'ABC' 'ABC/D[(EF)]G'?! fig.2

aA SMALL CAPITALS & ALL SMALL CAPS (SMCP & C2SC)
In Adobe applications there are two methods of applying small capitals. The first one, Small Caps (◊ 𐀀H) fig. 1 replaces only lower case letters with small caps. The second method, All Small Caps, fig. 2 replaces also capital letters with small capitals, and replaces regular quotation marks, exclamation points and question marks, slashes and asterisk with lowered small caps variations.

012345 ▶ 0̇12345
0̇12345 ▶ 0̇12345

0̇0̇ Slashed Zero (ZERO)
Because in some circumstances '0', can be mistaken for an 'O', alternative forms of 'slashed zero' are available for all styles of figures

fi fl ffi ffl fh fk ▶ fi fl ffi ffl fh fk
fi fi ▶ fi fi
λλγγ ▶ λλγγ

ffi Standard Ligatures (LIGA)
Standard ligatures are those which are designed to improve the kerning and readability of certain letter pairs. For example, when this feature is activated, typing 'f' and 'i' will automatically produce the 'fi' ligature. Using ligatures does not affect the spelling and hyphenation of your text in any way.

21/2 31/10 4125/5100 ▶ 2½ 3¼ 4¹²⁵/₅₁₀₀

7/8 Arbitrary Fractions (FRAC)
Typotheque OpenType fonts already include a number of pre-designed fractions. Other arbitrary fractions are easily made by using the fraction feature.

--> -> <-- ^- ▶ → → (←↑↓
-----> ▶ ----->
TT T̄T ▶ T̄T T̄T

ct' Discretionary Ligatures (DLIG)
Greta includes handy features such as replacing hyphen and greater than/less than signs with real arrows, or automatic activation of circled numerals by enclosing them in parenthesis when the discretionary ligature feature is activated. Brackets activate alternative inverse enclosed numerals. Discretionary ligatures are off by default in Adobe applications.

x (1+1.42 × 6) = y37 πr2 ▶ x^(1+1.42×6) = y³⁷ π^{r2}

x² Superscript / superiors (SUPS)
Replaces all styles of figures (old style, tabular, lining) and letters with their superior alternates, which can be used for footnotes, formulas, etc. Superior characters are more legible than mathematically scaled characters, have a similar stroke weight, are spaced more generously, and better complement the rest of the text.

H2O (10,00 + \$500) sm ▶ H₂O (10.00 + \$500) sm

H₂ Subscript / inferiors (SINF)
Replaces all styles of figures (old style, tabular, lining) and letters with their inferior alternates, used primarily for mathematical or chemical notation. Inferior characters are more legible than mathematically scaled characters, have a similar stroke weight, are spaced more generously, and better complement the rest of the text.

{{[012-3456-789]}}
 {{[o12-3456-789]}}
 {{{o12-3456-789}}}
 {{{[012-3456-789]}}}

1st 2nd 3rd M^{lle} N^o1

€\$¢£¥m€¢£¤¥¦§¨ª«¬®¯°±²³´µ¶·¸¹º»¼½¾¿

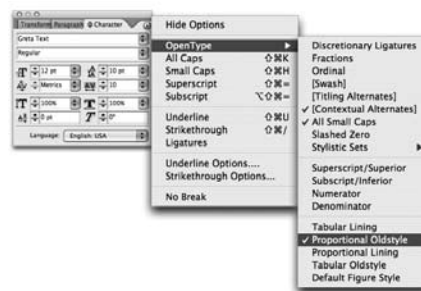
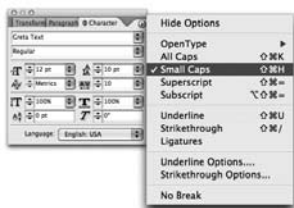
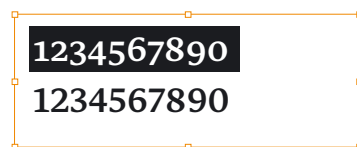
[[(())]] ▶ [(())]
 ŸŸŸ Ź ▶ ŸŸŸ Ź
 αβθφ ▶ αβθφ
 вгджзийклптчщъью ▶ вгджзүйклтпцщъьлю

123 Tabular Lining Figures (TNUM_LNUM)
 Tabular Oldstyle Figures (TNUM_ONUM)
6.1.9 Proportional Oldstyle Figures (PNUM_ONUM)
 Proportional Lining Figures (PNUM_LNUM)
123 Changes figures to any selected style: Lining figures which fit better with all-capital text, old-style figures, for use in a flow of lowercase and upper case text, or tabular (fixed width) versions.
619

1st Ordinals (ORDN)
 The ordinals feature replaces alphabetic glyphs (but not numerals) with their corresponding superior forms.

¥\$ Currency (CRCY)
 Collection of various currency symbols: (U+20A0..U+20CF)

SS 01 STYLISTIC SETS (SS01)
 Greta includes some alternative characters which can be activated by turning on 'stylistic sets'. Stylistic set 1 make for an easy access to open brackets and paranthesis. Set 2 replaces Greek zeta and Upsilon by its alternative version; set 3 replaces alpha, beta, theta and phi by scriptive alternates; and finally set 4 duplicates the Localised Forms feature, and uses shapes of Cyrillic preferred in Bulgaria.
SS 02
SS 03
SS 04



OpenType font format allows including more characters inside one single font file, so there is no need to have separate fonts for Old-style, Tabular, Lining figures, ornaments or small caps, given you are using an OpenType-savvy application such Adobe InDesign®, Adobe Illustrator®, QuarkXPress 7, etc. Instead of selecting a different font, one only need to activate an OpenType feature which controls the desired OpenType layout feature.

For example, to access Small Caps, go to **Character menu**, and select **Small Caps**. Alternatively you can use a shortcut Command+Shift+H.

OpenType fonts can contain various styles of numerals within one font. These different types of numbers are controlled by your typesetting application (such as Adobe InDesign®, Adobe Illustrator®, QuarkXPress 7, etc) Please note that not all applications support OpenType features. The software which cannot access these advances, for example Microsoft Word® will use only display 'default' figures. If you do not specify which style of numerals you would like to use, the application will use the 'default' figures. Greta, for example, uses proportional lining figures as default.

If you go to **Character** and then **OpenType** menu in Adobe applications, there you can change the numbers to any other desired numeral style.

For more about OpenType information go to www.typotheque.com/opentype

Font overview

| | |
|---------------------------------------|--|
| Family name | Greta Display Std |
| Designed by | Peter Bilak & Nikola Djurek (Cyrillic by Gayaneh Bagdasaryan & Alexei Kassian) |
| Released | July 2008 |
| Font format | OpenType PS |
| Supported encodings | Latin 1 (1252), Latin 2 - Central European (1250), Turkish (1254), Baltic (1257), Greek (1253), Cyrillic (1251), Greek Extended, Superscripts & Subscripts, Number forms, Arrows, Currency symbols, Geometric Shapes, Miscellaneous symbols |
| Supported languages | Greta Display Std supports following languages: Afrikaans, Basque, Bokmål, Bosnian, Breton, Catalan, Croatian, Czech, Danish, Dutch, English, Esperanto, Estonian, Faroese, Finnish, French, German, Greenlandic, Hawaiian, Hungarian, Icelandic, Indonesian, Irish Gaelic, Italian, Latvian, Lithuanian, Luxemburgish, Maltese, Norwegian, Polish, Portuguese, Rhaeto-Romanic, Romani, Romanian, Sami, Serbian (Latin), Slovak, Slovene, Sorbian, Spanish, Swahili, Swedish, Turkish and Welsh |
| Number of characters per style | 2.290 (Pro) , 966 (Std) |
| Number of fonts in family | 8 |
| Supported OpenType features | Capital Spacing (CPSP), Slashed Zero (ZERO), Denominators (DNOM), Arbitrary fractions (FRAC), Subscript/inferiors (SINF), Superscript/Superiors (SUPS), Case-Sensitive Forms (CASE), Small Capitals From Capitals (C2SC), Small Capitals (SMCP), Oldstyle Figures (ONUM), Lining Figures (LNUM), Tabular Figures (TNUM), Proportional Figures (PNUM), Ordinals (ORDN), Stylistic Alternates (SALT), Stylistic Sets (SS01), Standard Ligatures (LIGA), Discretionary Ligatures (DLIG), Ornaments (ORNAM), Access all Alternates (AALT), Glyphs composition/decomposition (CCMP) |
| Available at | www.typotheque.com |

For the complete list of applications taking advantage of OpenType layout features please visit

www.typotheque.com/fonts/opentype_feature_support

Typotheque

Zwaardstraat 16, 2584 TX Den Haag, The Netherlands

E: info@typotheque.com, T: +31 70 322 6119, F: +31 84 831 6741

Greta Display, which format to choose

| | PostScript font | OpenType Std | OpenType Pro |
|-------------------------------|-----------------|--------------|--------------|
| Number of glyphs per font | 246 | 966 | 2290 |
| Number of supported languages | 26 | 44 | 76 |
| Number of fonts in family | 16 | 8 | 8 |
| Price per font | € 60 | € 90 | € 120 |
| Price of complete family | € 420 | € 480 | € 620 |