

# November Stencil

*Typotheque type specimen & OpenType feature specification.  
Please read before using the fonts.*

OpenType font family supporting Latin based languages with their own small caps, with extensive typographic features.

Lat Łą Łł Eλλ "Eě Kиp Kиp Việt g.g

OpenType features in November Stencil

BB aA 1<sup>st</sup> ff ct 7/8 H<sub>2</sub> x<sup>2</sup>  
i-I 0-0 0-0 123 123 619 ¥\$ SS 01 SS 02

Designed by Peter Bilak, 2018

## *What is OpenType?*

OpenType is a cross-platform font format developed by Adobe and Microsoft. It has a potential to provide advanced typographic features such as multilingual character sets, ligatures, small capitals, various numeral styles, and contextual substitutions.

OpenType, as the new industry standard, supports Unicode, which enables the fonts to contain a large number of characters. While PostScript fonts are technically limited to a maximum of only 256 characters, OpenType fonts can have more than 65,000 glyphs. This means that a user does not need to have separate fonts for Western, Central European, Baltic, Cyrillic or Greek languages, but could have one single file which supports all these encodings.

OpenType fonts work in all applications, however only some applications take advantage of the advanced OpenType features. Other applications will only use the first 256 characters.



CHARACTER SET

ΑΒΓΔΕΖΗΘΙΚΛΜΝΞΟΠΡΣΤΥΦΧΨΩ  
αβγδεζηθικλμνξοπρσςτυφχψω

àáâãäåæçàáâãäåæçàáâãäåæçàáâãäåæçàáâãäåæç  
èéêëìíîïðñòóôõö÷øùúûüýþÿ  
ώωώώώώώώώώώώώώώώώώώώώώώ

АБВГДЕЁЖЗИЙКЛМНОПРСТУФХЦЧШЩЪЫ  
ЬЭЮЯГГГЕСІІЈЛЬЊКЎЦЅӨВӘЁЙ  
абвгдеёжзийклмнопрстуф  
хцчшщъыьэюя

èëĥġesııĵľňĥkíÿııŕģżķŋŷıçłİıøÿııřğżķ  
кнп̣ŕq̣ṣṭç̣ẹẹj̣ḳł̣ŋ̣ı̣ç̣ṃặặæ̣ẹ̌ọ̈ẓ̇ẓı̣ị̈ọ̈ẹ̈ỵ̈ı̣ç̣ğ̣ı̣ṿğ  
джзийклптцшщъьюг



# November Stencil

## About the typeface

Inspired by industrial signage, November Stencil gives a unique flavour to short texts and also provides surprising possibilities for colour typography and motion graphics.

It all started with November, a rational, utilitarian typeface inspired by street signs, and it continued with October, a rounded typeface created by the rotary cutters of a CNC router. November Stencil, the latest expansion of the project, continues to explore the industrial heritage of typography with the familiar interrupted strokes seen on railway wagons, wooden crates and architectural diagrams.

True to its name, November Stencil has the expected gaps, systematically positioned to break letters into strokes, or sometimes to maximise the aesthetic impact. Each of its nine stencil weights also offers three separate layered styles that open intriguing possibilities for the creative use of colours and animation.

November Stencil is available in three writing scripts (Latin, Cyrillic, Greek). Hebrew, Armenian, and Arabic are under development and will follow shortly.

## About the designer

Peter Bilák designed the Latin, Greek and Hebrew version of November in 2016. He works in the field of editorial, graphic, and type design, teaches at the Royal Academy of Arts in The Hague. Started Typotheque in 1999, Dot Dot Dot in 2000, Indian Type Foundry in 2009, Works That Work magazine in 2012, and Fontstand, in 2015. Member of AGI (Alliance Graphique Internationale).

Nikola Djurek and Any Clymer assisted with the production of these fonts.

Nº 789020 MP

64t fare 26 000kg

NLU 29478

SCRAP METAL  
USE ONLY

IWB 10m

Min 70m

Centres 12m

IMPORT → ← EXPORT

ВЛАДИВОСТОК

NO ENTRY

ΑΠΑΓΟΡΕΥΕΤΑΙ  
Η ΕΙΣΟΔΟΣ

52.079946, 4.288475

ISO/IEC 19762-5:2008

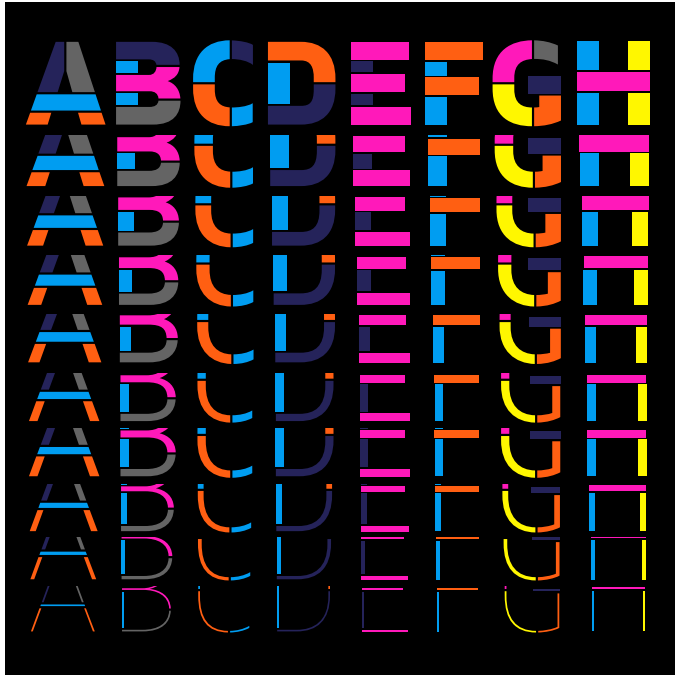
37HQ+X9 The Hague

ACHTUNG!

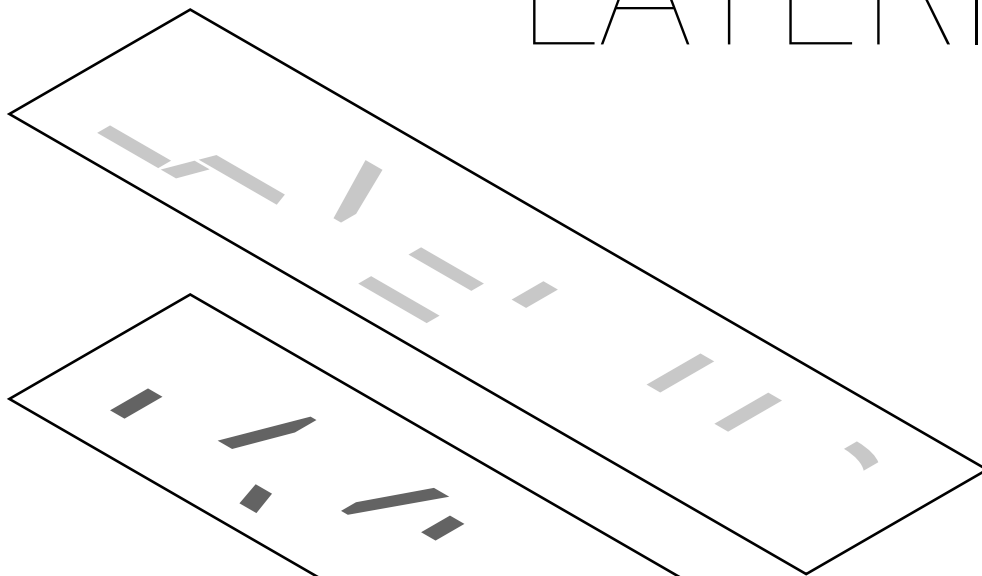
Sesame  
Street  
Scribbles

?&€øæ

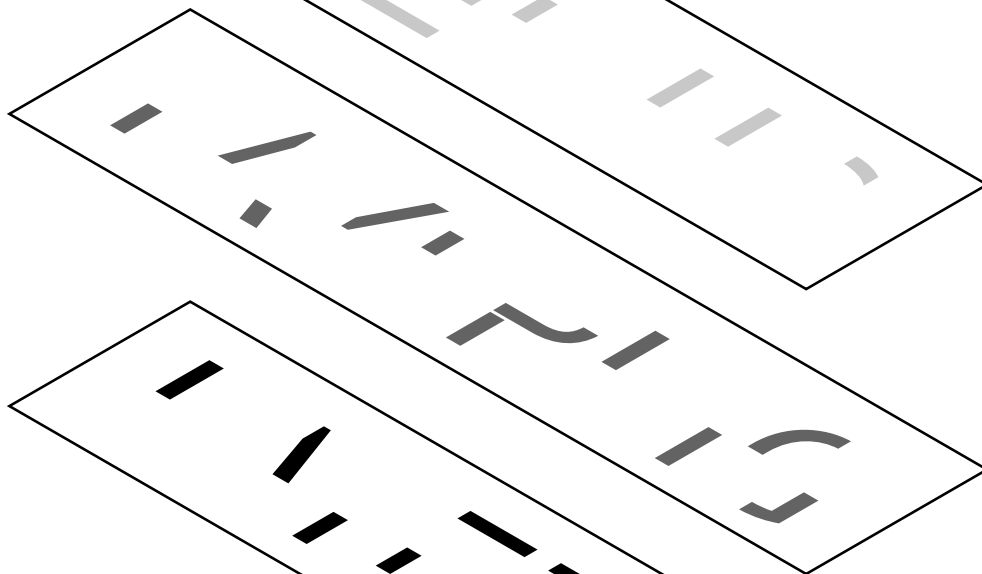
SPACE  
AND  
ORDER



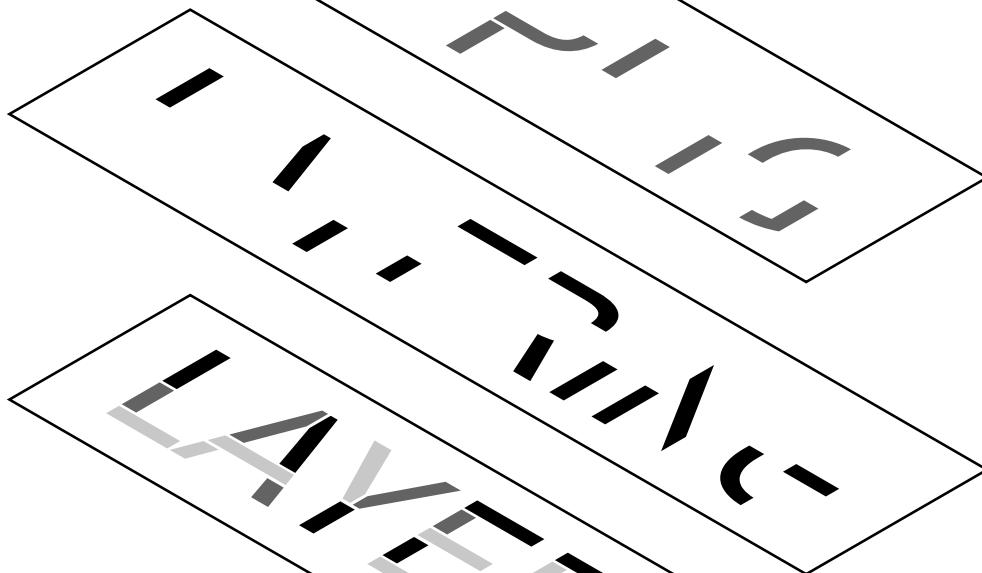
# LAYERING



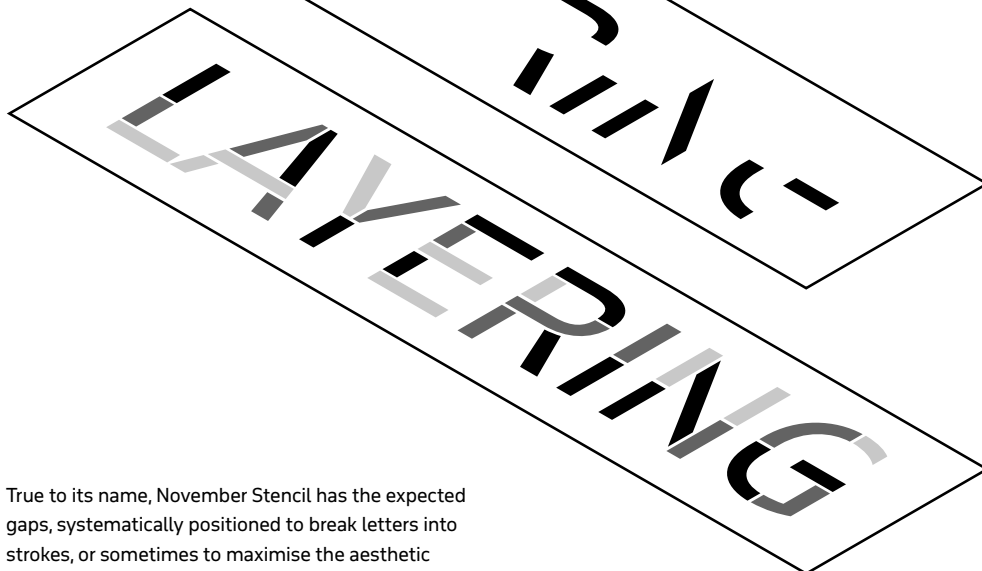
Regular A



Regular B



Regular C



A+B+C

True to its name, November Stencil has the expected gaps, systematically positioned to break letters into strokes, or sometimes to maximise the aesthetic impact. Each of its nine stencil weights also offers three separate layered styles that open intriguing possibilities for the creative use of colours and animation.





U N X P E C T E D

R E S U L T S

# November Type System

STYLES			
November	<b>October</b>	<b>Slab</b>	Stencil
WIDTHS			
abc abc abc	abc abc abc	abc abc abc	
WEIGHT S			
aaaaaaaaaa	aaaaaaaaaa	aaaaaaaaaa	aaaaaaaaaa

+ LA YERS 2 + 1

Hairline	<i>Italic</i>	Hairline	<i>Italic</i>	Hairline	<i>Italic</i>
Thin	<i>Italic</i>	Thin	<i>Italic</i>	Thin	<i>Italic</i>
ExtraLight	<i>Italic</i>	ExtraLight	<i>Italic</i>	ExtraLight	<i>Italic</i>
Light	<i>Italic</i>	Light	<i>Italic</i>	Light	<i>Italic</i>
Regular	<i>Italic</i>	Regular	<i>Italic</i>	Regular	<i>Italic</i>
Medium	<i>Italic</i>	Medium	<i>Italic</i>	Medium	<i>Italic</i>
<b>Bold</b>	<i>Italic</i>	<b>Bold</b>	<i>Italic</i>	<b>Bold</b>	<i>Italic</i>
<b>Heavy</b>	<i>Italic</i>	<b>Heavy</b>	<i>Italic</i>	<b>Heavy</b>	<i>Italic</i>
<b>Black</b>	<i>Italic</i>	<b>Black</b>	<i>Italic</i>	<b>Black</b>	<i>Italic</i>

## OVERVIEW OF SUPPORTED OPENTYPE LAYOUT FEATURES

i¿ab?! (H75) ▶ i¿AB?! (H75)



## Case Sensitive forms (CASE)

When function 'change to caps' is applied from within an application (not when text is typed in caps) appropriate case-sensitive forms are automatically applied. Regular brackets, parenthesis, dashes and hyphens are replaced with their capital forms, as well as alternative set of numerals and currency symbols matching the height of capitals.

Small Caps ▶ SMALL CAPS  
All Small Caps ▶ ALL SMALL CAPS

fig.1



## Small Capitals &amp; All Small Caps (SMCP &amp; C2SC)

In Adobe applications there are two methods of applying small capitals. The first one, Small Caps [cscx] fig. 1 replaces only lower case letters with small caps. The second method, All Small Caps, fig. 2 replaces also capital letters with small capitals, and replaces regular quotation marks, exclamation points and question marks, slashes and asterisk with lowered small caps variations.

fig.2



## Slashed Zero (ZERO)

Because in some circumstances '0', can be mistaken for an 'O', alternative forms of 'slashed zero' are available for all styles of figures

012345 ▶ 0̸12345  
012345 ▶ 0̸12345

## Arbitrary Fractions (FRAC)

Typotheque OpenType fonts already include a number of pre-designed fractions. Other arbitrary fractions are easily made by using the fraction feature.

21/2 31/10 ▶ 2½ 3¼



## Tabular Lining Figures (TNUM+LNUM)



## Tabular Oldstyle Figures (TNUM+ONUM)



## Proportional Oldstyle Figures (PNUM\_ONUM)



## Proportional Lining Figures (PNUM+LNUM)

Changes figures to any selected style: Lining figures which fit better with all-capital text, old-style figures, for use in a flow of lowercase and upper case text, or tabular (fixed width) versions.

```
{{[012-3456-789]}}
```

```
{{[012-3456-789]}}
```

```
{{[012-3456-789]}}
```

```
{{[012-3456-789]}}
```

-&gt; -^ ^- ▶ → ↑ ↓



## Discretionary Ligatures (DLIG)

The discretionary ligature feature creates real arrows when you type the combination -> (right arrow), <- (left arrow), -^ (up arrow) or ^- (down arrow). Type numbers between parenthesis or brackets for circled numerals. Discretionary ligatures are off by default in Adobe applications.

(r) (p) (u) (1) [2] ▶ ® ™ © ① ②

C202 ▶ C<sup>2</sup>O<sup>2</sup>

## Superscript / Superiors (SUPS)

Replaces all styles of figures (old style, tabular, lining) and letters with their superior alternates, which can be used for footnotes, formulas, etc. Superior characters are more legible than mathematically scaled characters, have a similar stroke weight, are spaced more generously, and better complement the rest of the text.

aaäää ▶ aáãä



## Stylistic Set 1

November includes alternative character 'a', and its accented variants, which can be activated by turning on Stylistic Set 01.